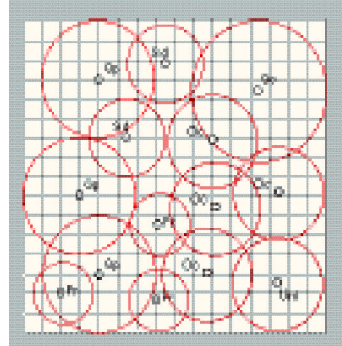


# ALLEGATO C

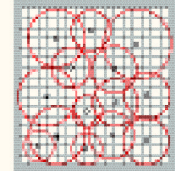
## Formazioni Boschive (Art. 3.2.2.6)

parcella minima : formazione chiusa

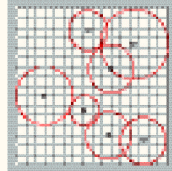


**strato arboreo:**  
 Qp *Quercus pubescens* 30%  
 Qc *Quercus cerris* 15%  
 Oc *Castanea sativa/Kola* 25%  
 Fr *Fragaria vesca* 10%  
 Sd *Sorbus domestica* 10%  
 Um *Ulmus minor* 10%

formazione chiusa



formazione aperta



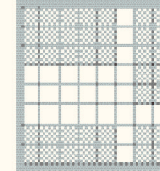
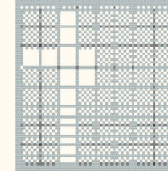
**strato arbustivo:**

*Eurogaster europaea* 15% *Corylus monogyne* 20%  
*Rosa sempervirens* 10% *Medicago sativa* 10%  
*Ligustrum vulgare* 15% *Cornus sanguinea* 25%

strato arbustivo - copertura massima (80%)

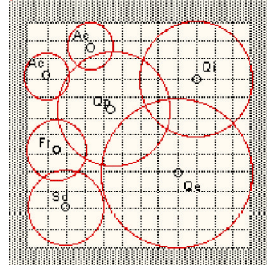


strato arbustivo - copertura minima (80%)



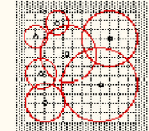
formazione mista dei pendii freschi (querceto semimesofilo) : modulo minimo di impianto 40 m x 40 m = 1600 mq

parcella minima : formazione chiusa



**strato arboreo:**  
 Qp *Quercus pubescens* 20%  
 Qc *Quercus petraea* 40%  
 Fr *Fragaria vesca* 5%  
 Sd *Sorbus domestica* 10%  
 Qi *Quercus ilex* 20%  
 Ac *Acer campestre* 5%

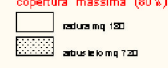
formazione chiusa



formazione aperta



strato arbustivo - copertura massima (80%)

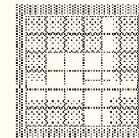


strato arbustivo - copertura media (70%)



**strato arbustivo:**

*Lonicera etrusca* 10%  
*Viburnum tinus* 20%  
*Ruscus aculeatus* 15%  
*Laurus nobilis* 20%  
*Rosa sempervirens* 10%  
*Crataegus monogyne* 10%  
*Cornus sanguinea* 10%  
*Colubia arvensis* 5%

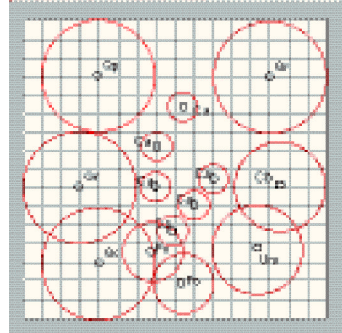


strato arbustivo - copertura minima (80%)



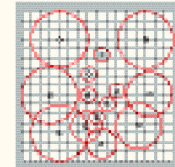
formazione mista dei pendii caldi (querceto xerofilo) : modulo minimo di impianto 30 m x 30 m = 900 mq

parcella minima : formazione chiusa

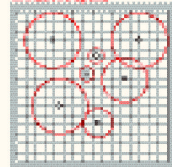


**strato arboreo:**  
 Qc *Quercus robur* 30%  
 Qs *Quercus cerris* 20%  
 Oc *Castanea sativa* 10%  
 Qp *Quercus pubescens* 15%  
 Um *Ulmus minor* 10%  
 Fa *Fragaria vesca* 10%  
 Ca *Corylus avellana* 5%

formazione chiusa



formazione aperta



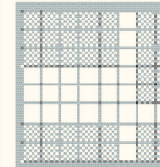
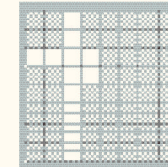
**strato arbustivo:**

*Cornus sanguinea* 30%  
*Rubus ulmi/Kalis* 10%  
*Prunus sp.* 30%

strato arbustivo - copertura massima (80%)

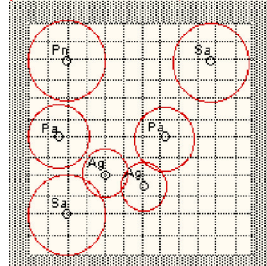


strato arbustivo - copertura minima (80%)



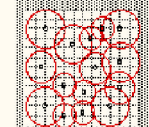
formazione mista di terrazzo fluviale (querceto mesofilo) : modulo minimo di impianto 40 m x 40 m = 1600 mq

parcella minima : formazione aperta

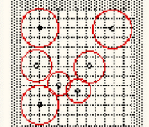


**strato arboreo:**  
 Pn *Populus nigra* 20%  
 Pa *Populus alba* 20%  
 Sa *Salix alba* 40%  
 Ag *Alnus glutinosa* 20%

formazione chiusa



formazione aperta



strato arbustivo - copertura massima (80%)



strato arbustivo - copertura media (70%)



**strato arbustivo:**  
*Salix caprea* 5%  
*Salix purpurea* 25%  
*Salix triandra* 5%  
*Prunus spinosa* 20%  
*Crataegus monogyne* 10%  
*Eurogaster europaea* 10%  
*Cornus mas* 10%  
*Sambucus nigra* 20%



strato arbustivo - copertura minima (80%)

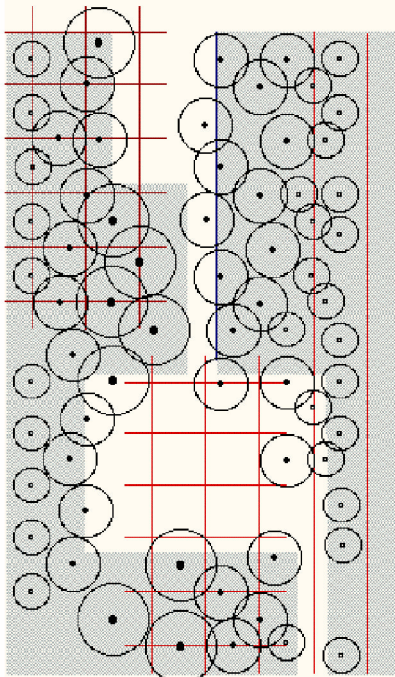
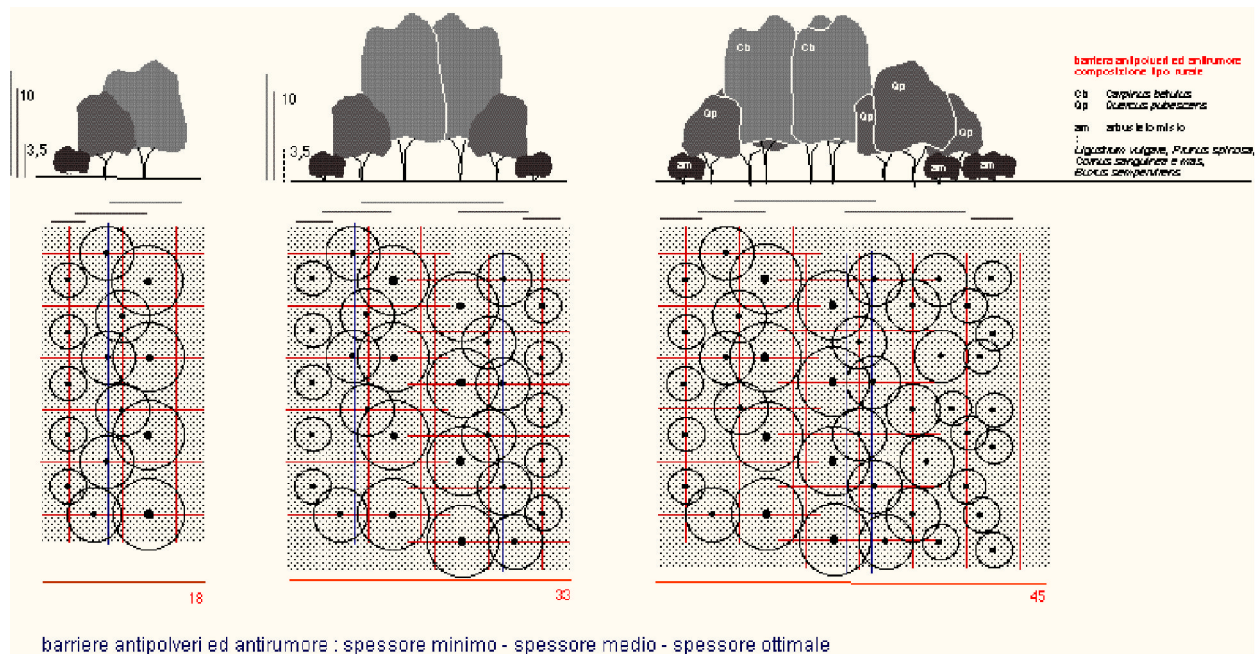


formazione mista perialveale-ripariale (pioppeto-saliceto) : modulo minimo di impianto 30 m x 30 m = 900 mq

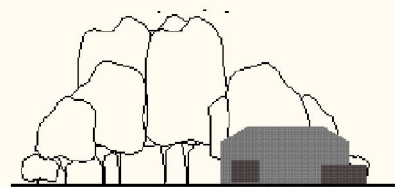
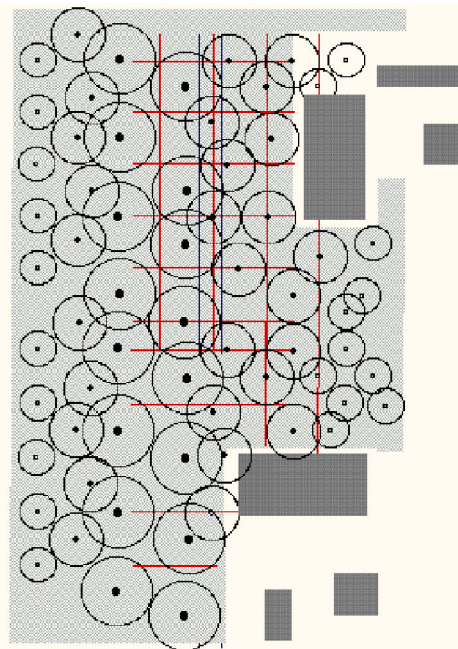


ALLEGATO D

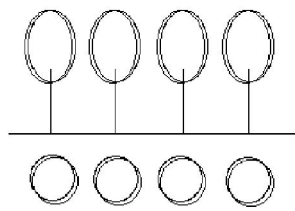
Barriere vegetali (Art. 3.2.2.5)



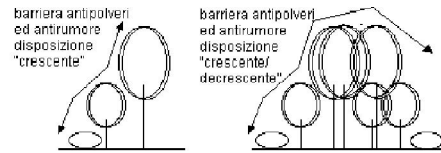
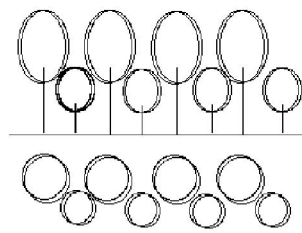
barriera di compensazione dell'inquinamento con radure attrezzate



barriera di compensazione dell'inquinamento con radure sul margine



barriere visive monofilare e plurifilare



## ALLEGATO E

### Percorsi pedonali, ciclabili e ciclo-pedonali (Art. 3.2.2.9 - 3.2.2.10 - 3.2.2.11)

