

# HOTEL SPORTING

## UMI 4.3.1

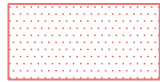
Scheda modificata con Delibera G.C. 7/2024



UMI 4.3.1



Superficie fondiaria



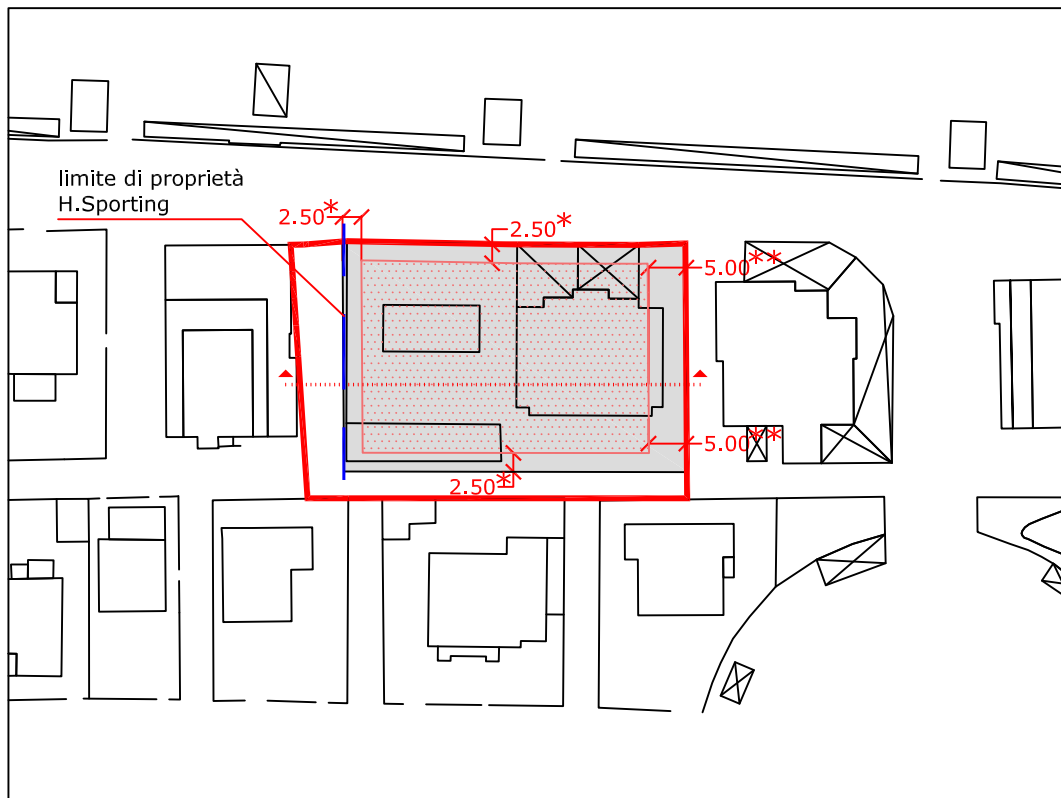
Area massimo ingombro

Ristrutturazione edilizia con demolizione e ricostruzione e ricomposizione delle quantità edificatorie con possibilità di ampliamento di 650 mq di Sn

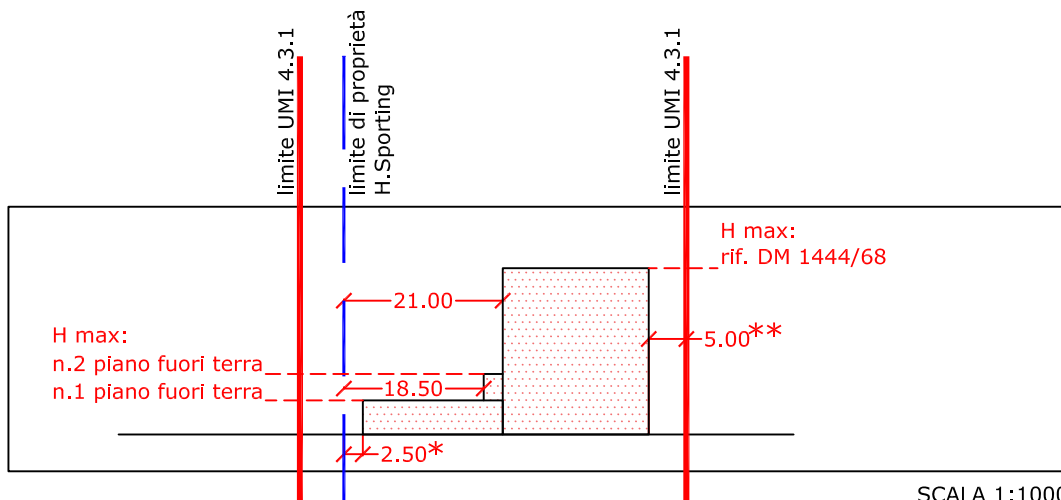
Destinazioni d'uso ammesse: Trh / R  
La Residenza è subordinata al mantenimento della capacità ricettiva alberghiera e alle condizioni stabilite con la Delibera G.C. 7/2024

L'attuazione dell'intervento è ammessa in deroga a quanto previsto dal comma 3 dell'art. 4.2.4.5 delle NTA di PRG

- \* Fatta salva la possibilità di attestarsi in allineamento con gli edifici limitrofi preesistenti
  - \*\* Fatta salva la possibilità di attestarsi sulla sagoma a terra dell'edificio preesistente
- E' fatto salvo il rispetto dei 10 m tra pareti finestrate nelle porzioni di edificio in ampliamento rispetto la sagoma esistente



SCALA 1:1000

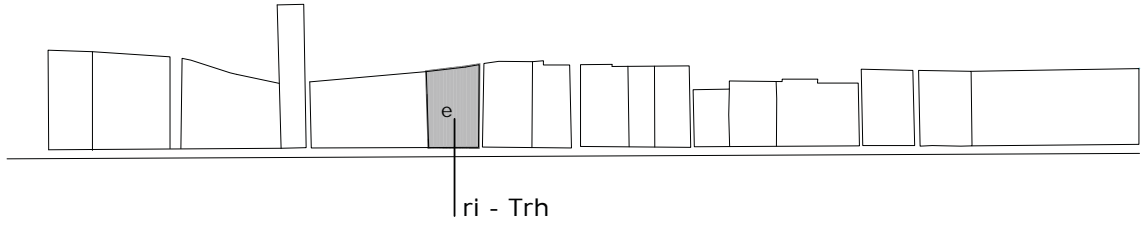


SCALA 1:1000

# HOTEL CONTINENTAL

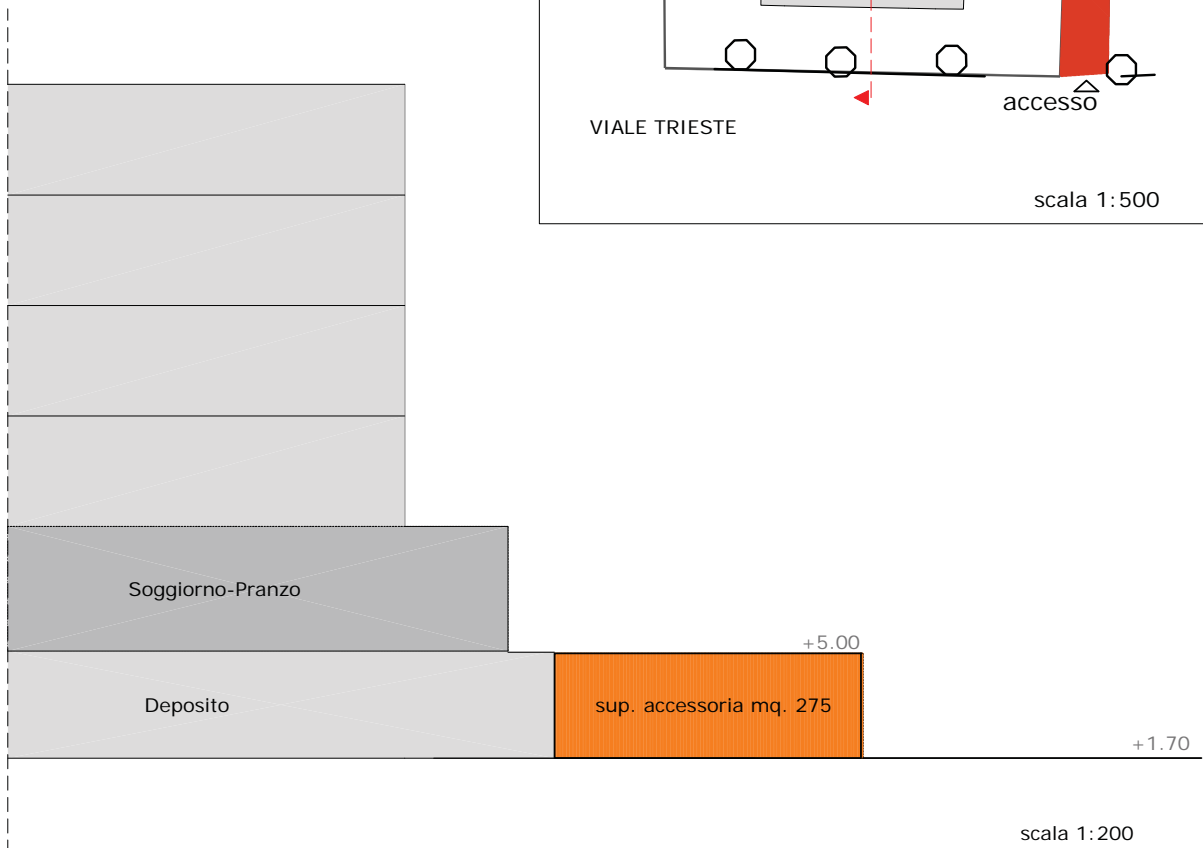
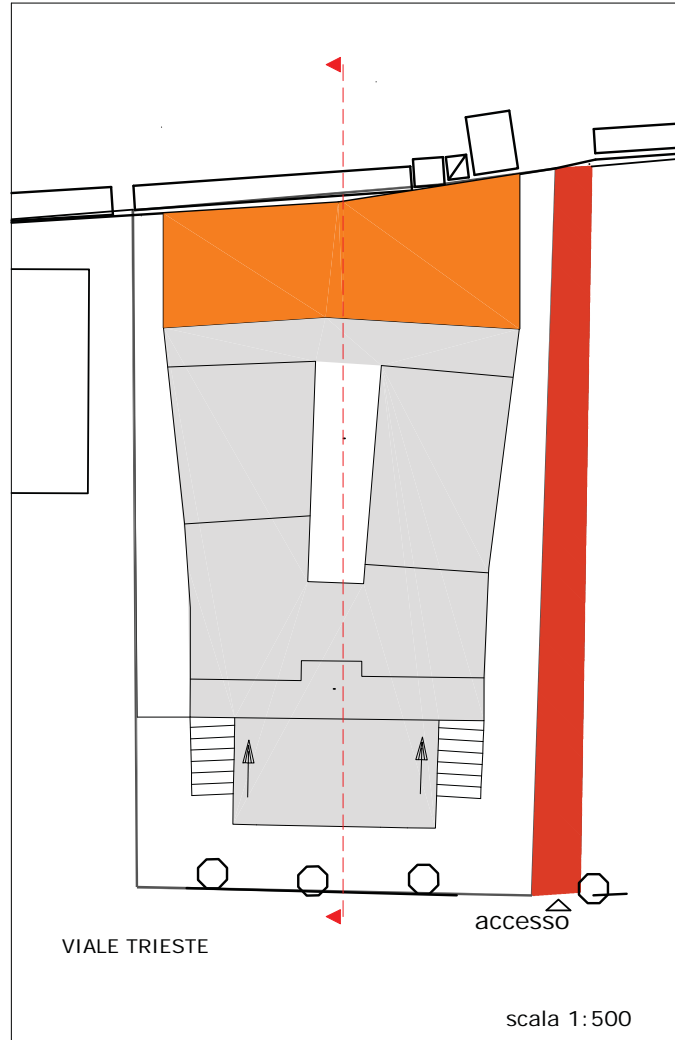
UMI 4.3.2

lotto e



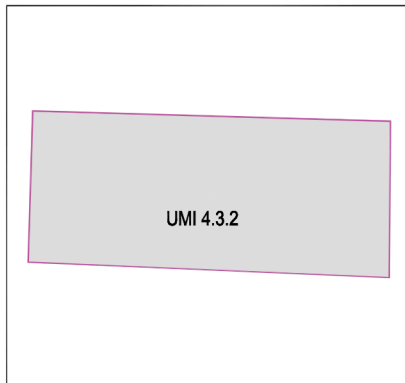
incremento superficie accessoria  
mq 275 PIANO TERRA




ristrutturazione edilizia  
destinazione esclusiva Trh



# HOTEL IMPERIAL SPORT

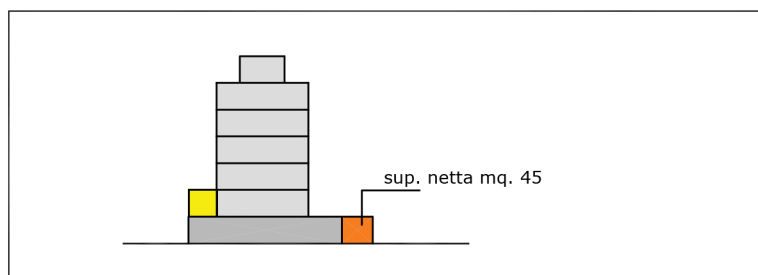
## UMI 4.3.2



-  incremento sup. netta al piano terra  
tamponamento di pergolato esistente  
con materiali leggeri e trasparenti mq. 31,25
-  incremento sup. netta al primo piano  
mq. 13,75
-  ristrutturazione edilizia  
destinazione esclusiva Trh



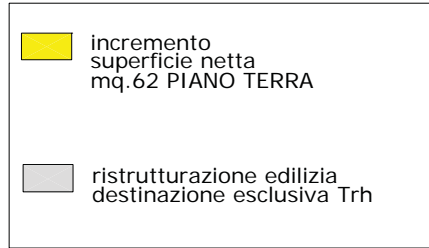
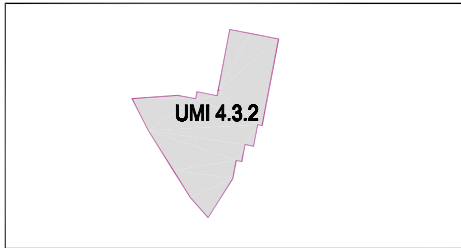
SCALA 1:1000



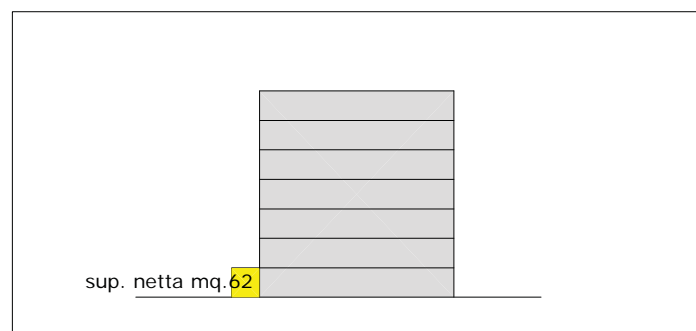
SCALA 1:1000

# HOTEL BRISTOL

## UMI 4.3.2



SCALA 1:1000



SCALA 1:1000

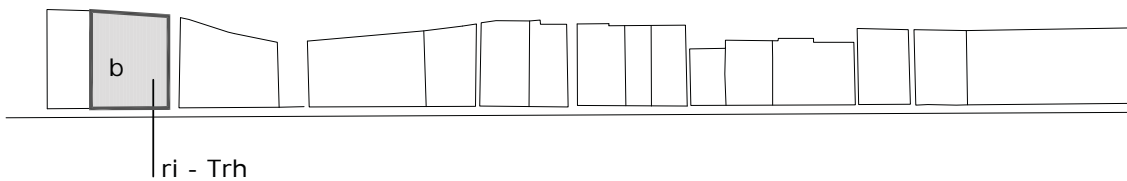
UMI 4.3.2  
lotti a - p



# HOTEL ASTORIA

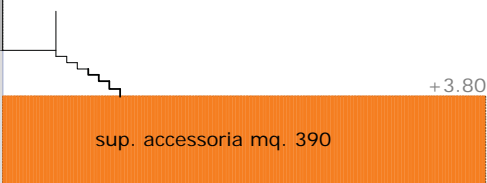
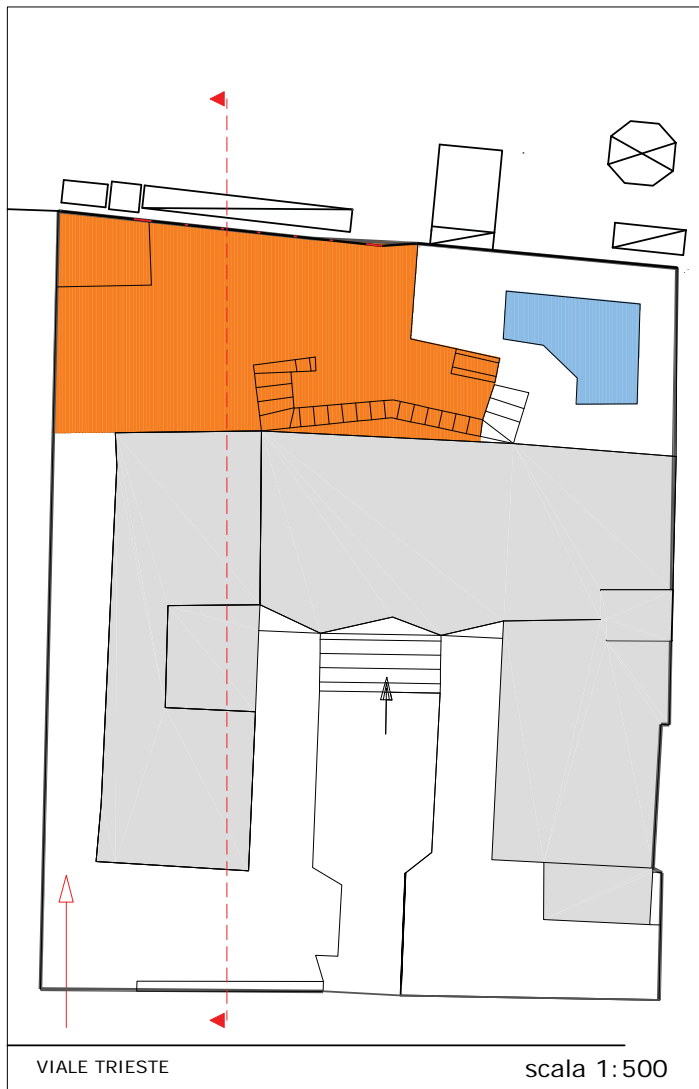
UMI 4.3.2

lotto b



incremento superficie accessoria  
mq 390 PIANO TERRA

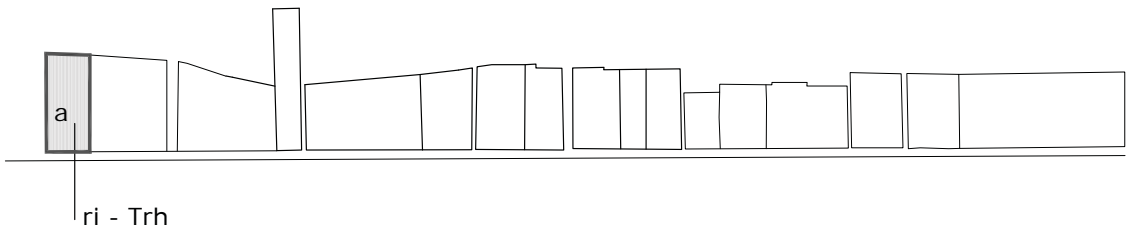
ristrutturazione edilizia  
destinazione esclusiva - Trh



scala 1:200

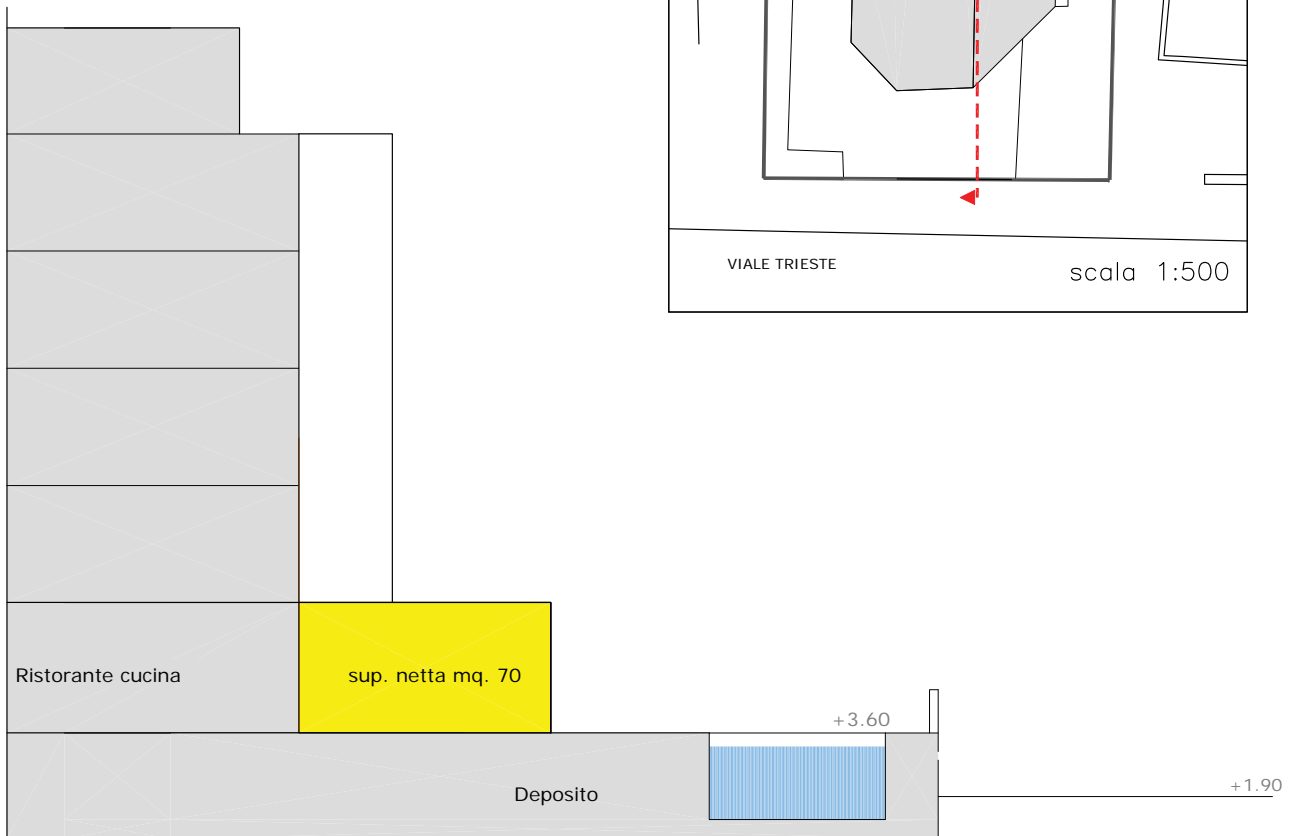
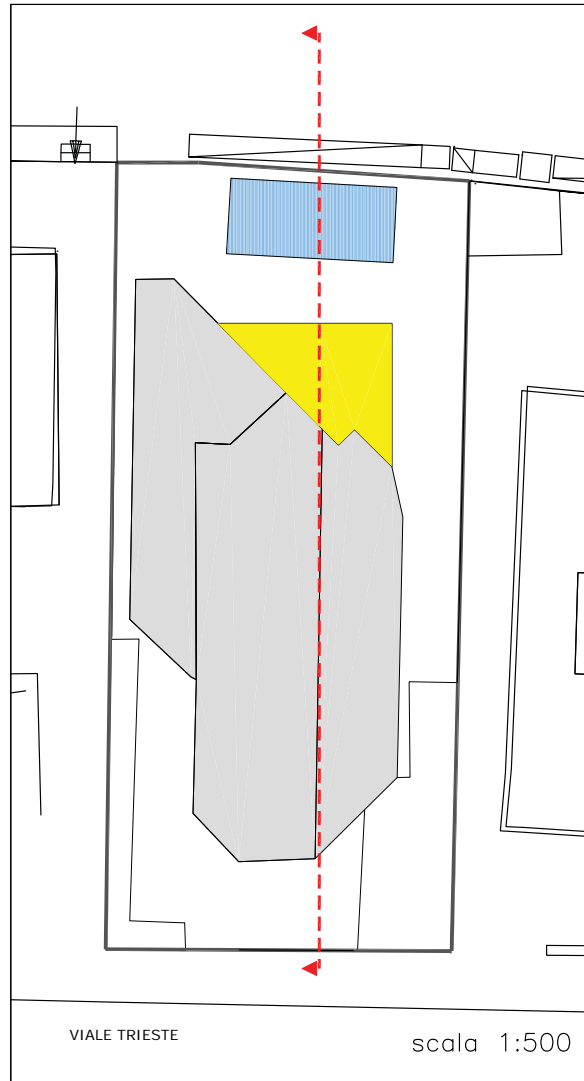
# HOTEL BELLEVUE

UMI 4.3.2  
lotto a



**Legend:**

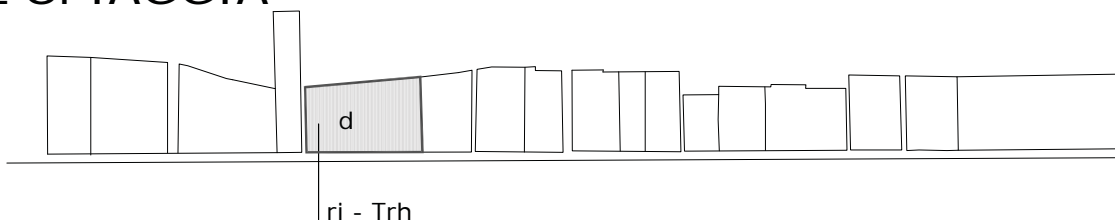
- incremento superficie netta mq 70 PIANO TERRA
- ristrutturazione edilizia destinazione esclusiva Trh



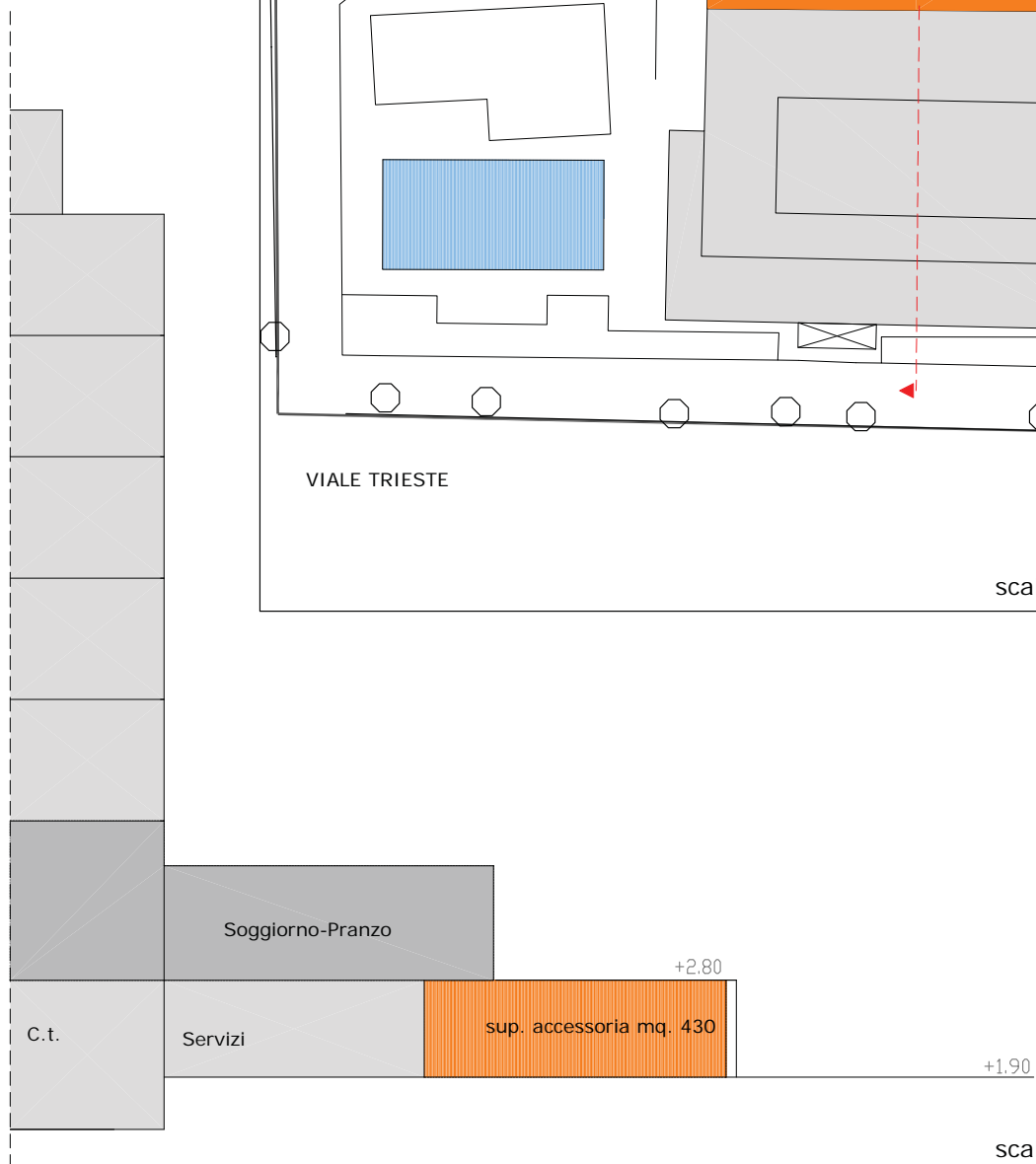
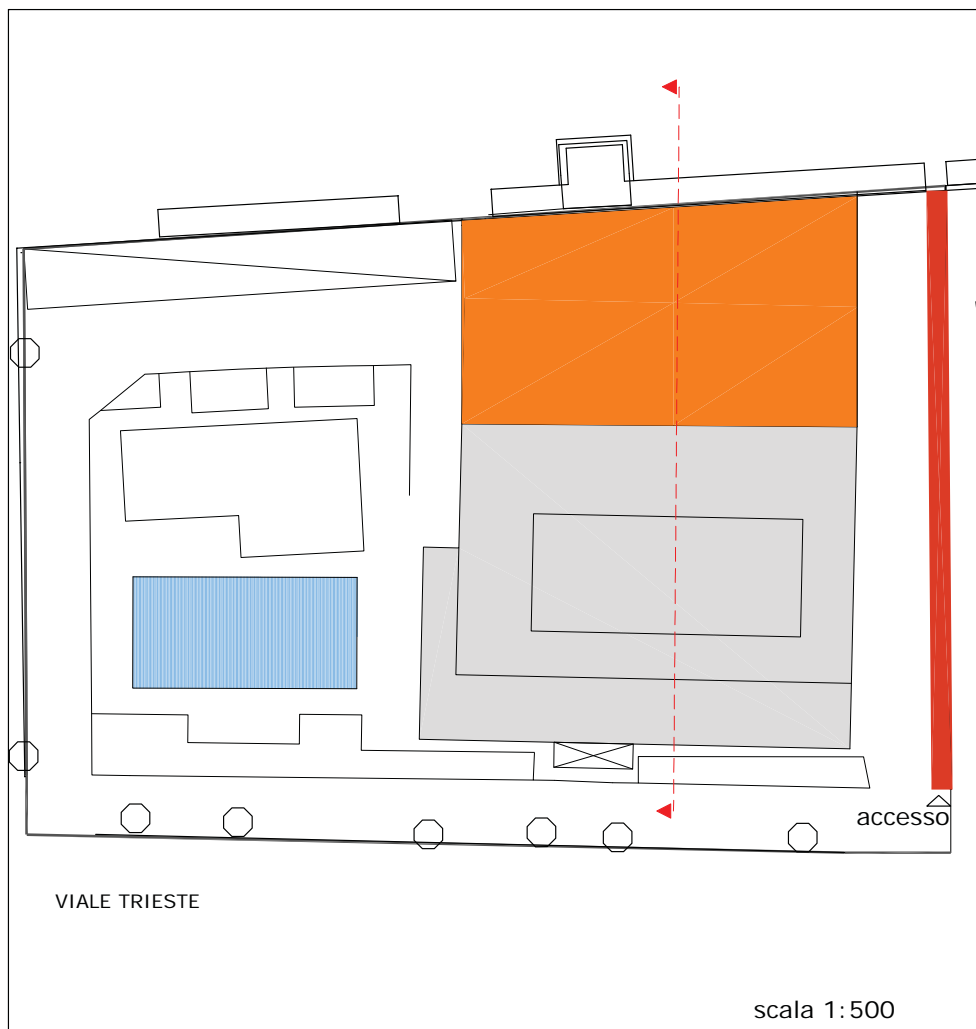
scala 1:200

# HOTEL SPIAGGIA

UMI 4.3.2  
lotto d



- incremento superficie accessoria  
mq 430 PIANO TERRA
- ristrutturazione edilizia  
destinazione esclusiva Trh

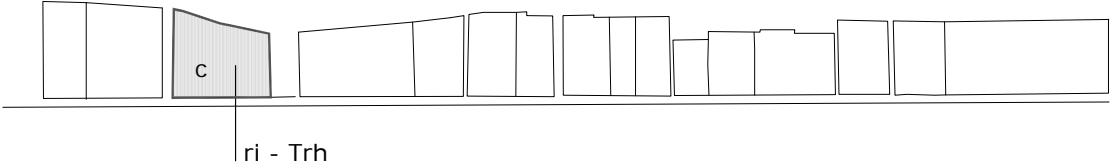




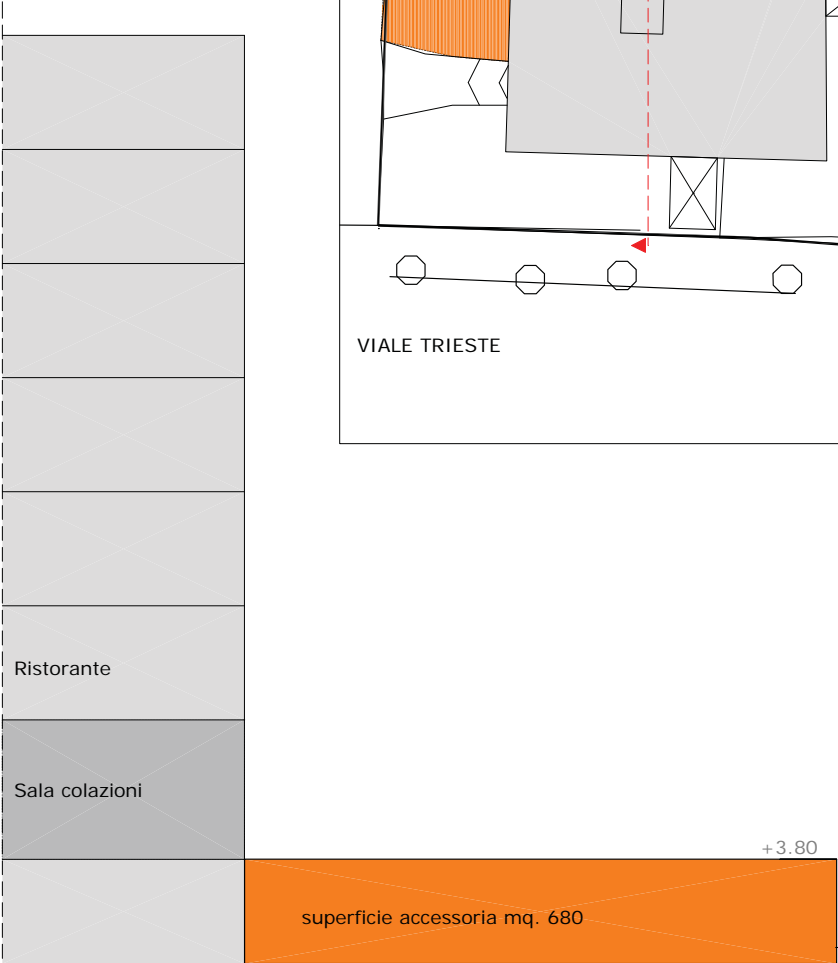
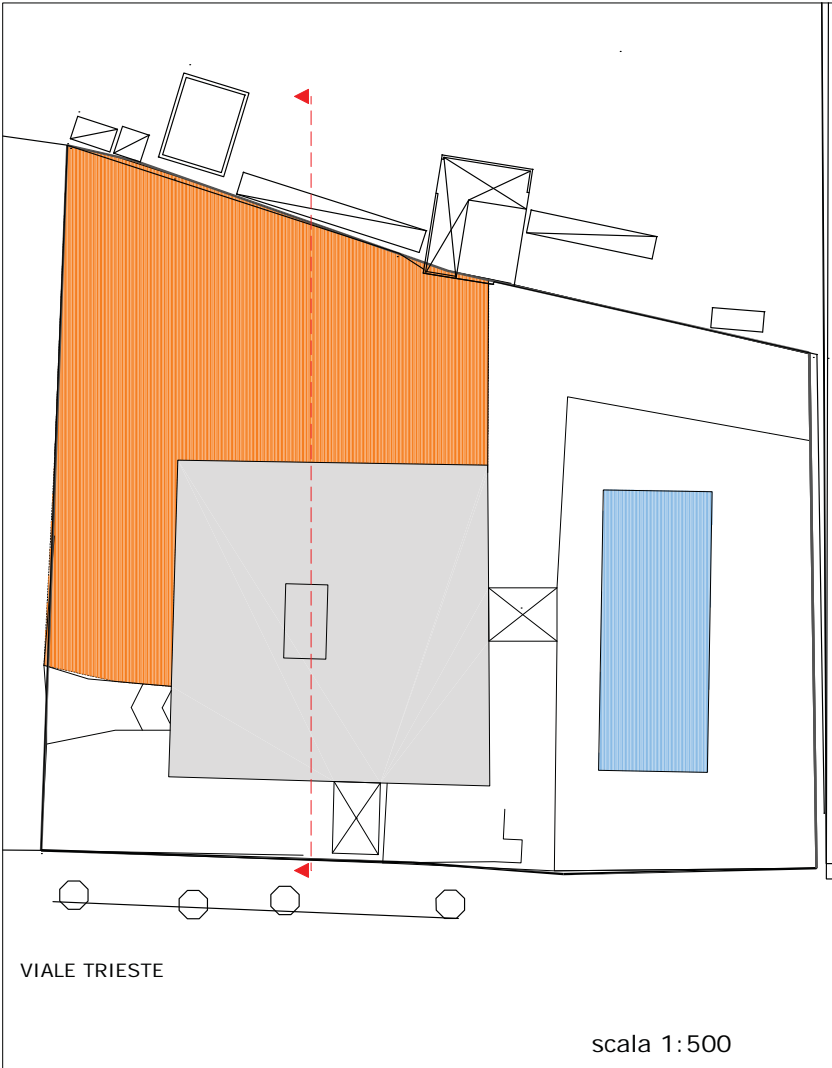
# HOTEL MAJESTIC

UMI 4.3.2

lotto c



- incremento superficie accessoria mq 680 PIANO TERRA
- ristrutturazione edilizia destinazione esclusiva Trh

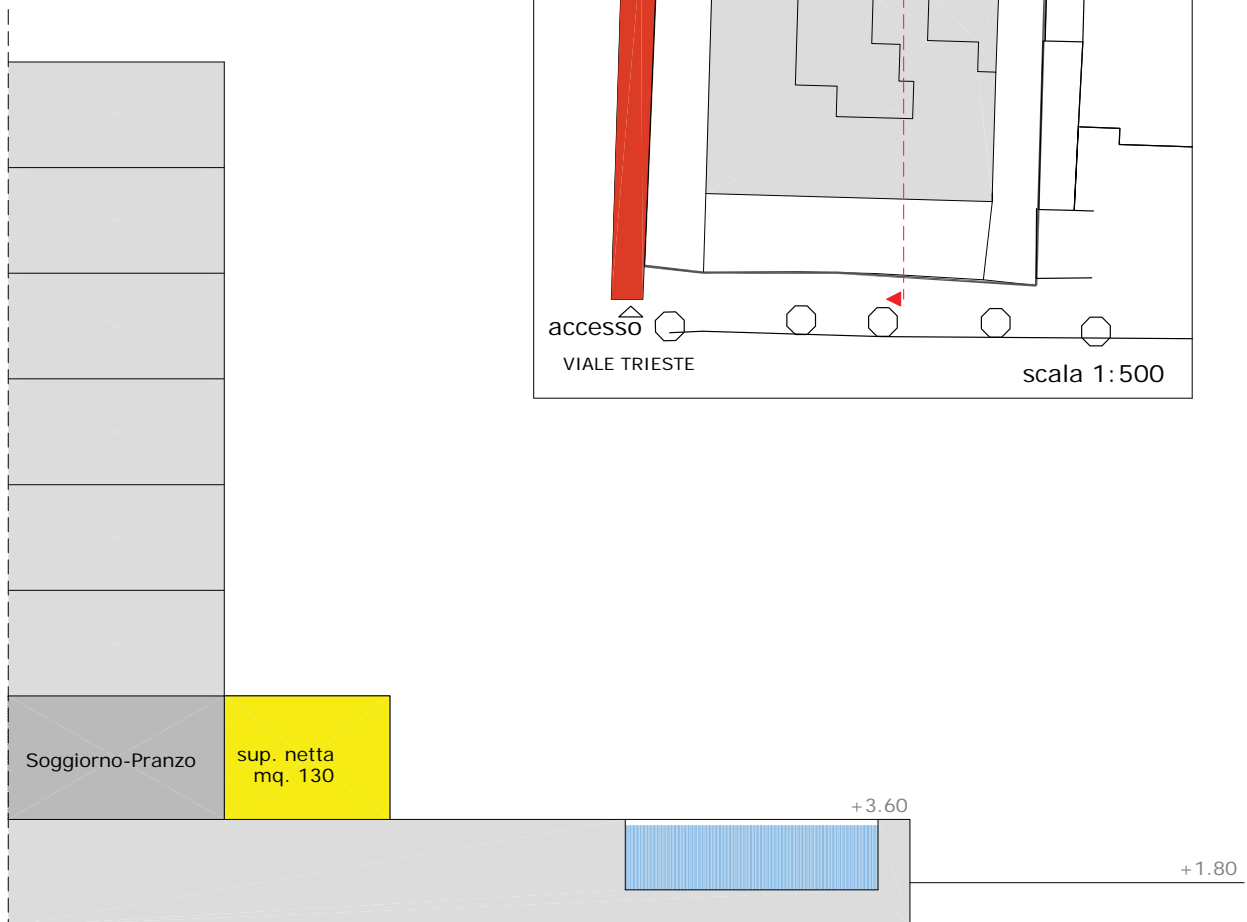
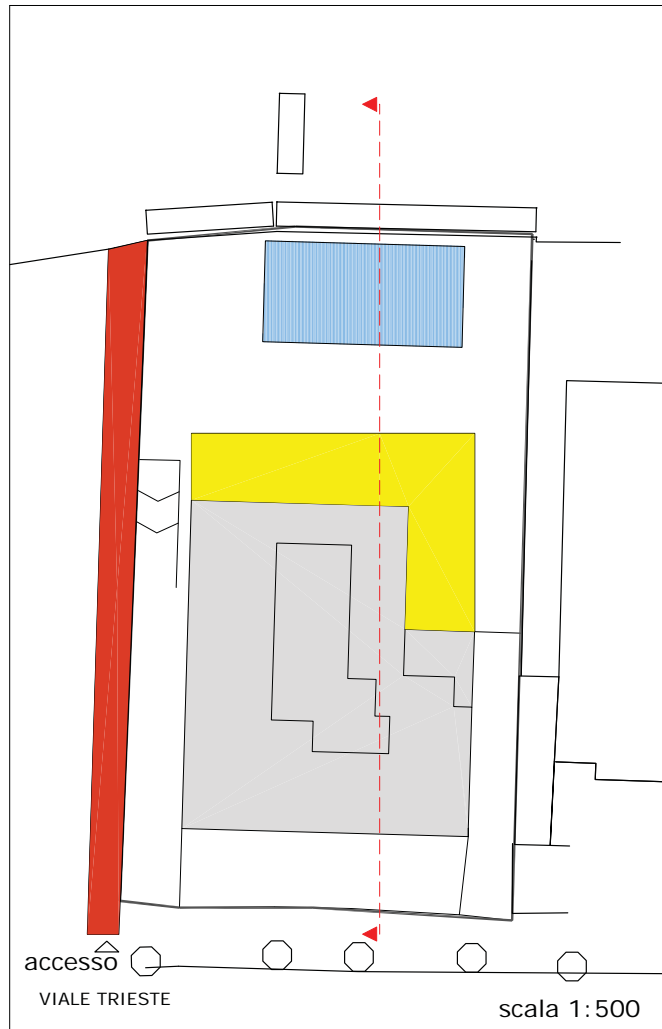
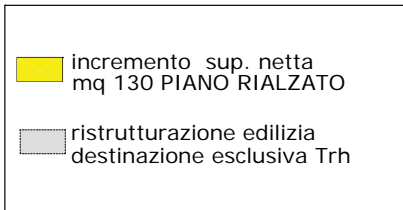
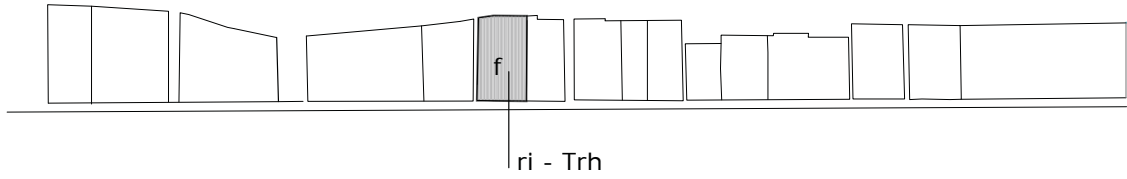


scala 1:200

# HOTEL EMBASSY

UMI 4.3.2

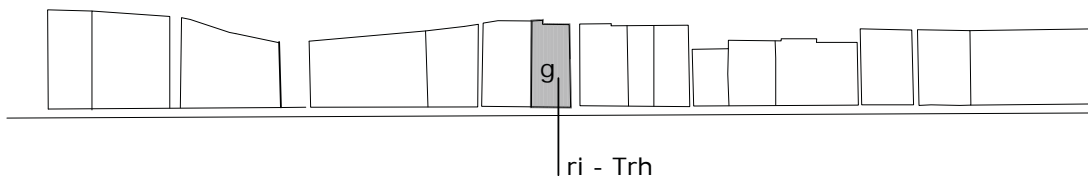
lotto f



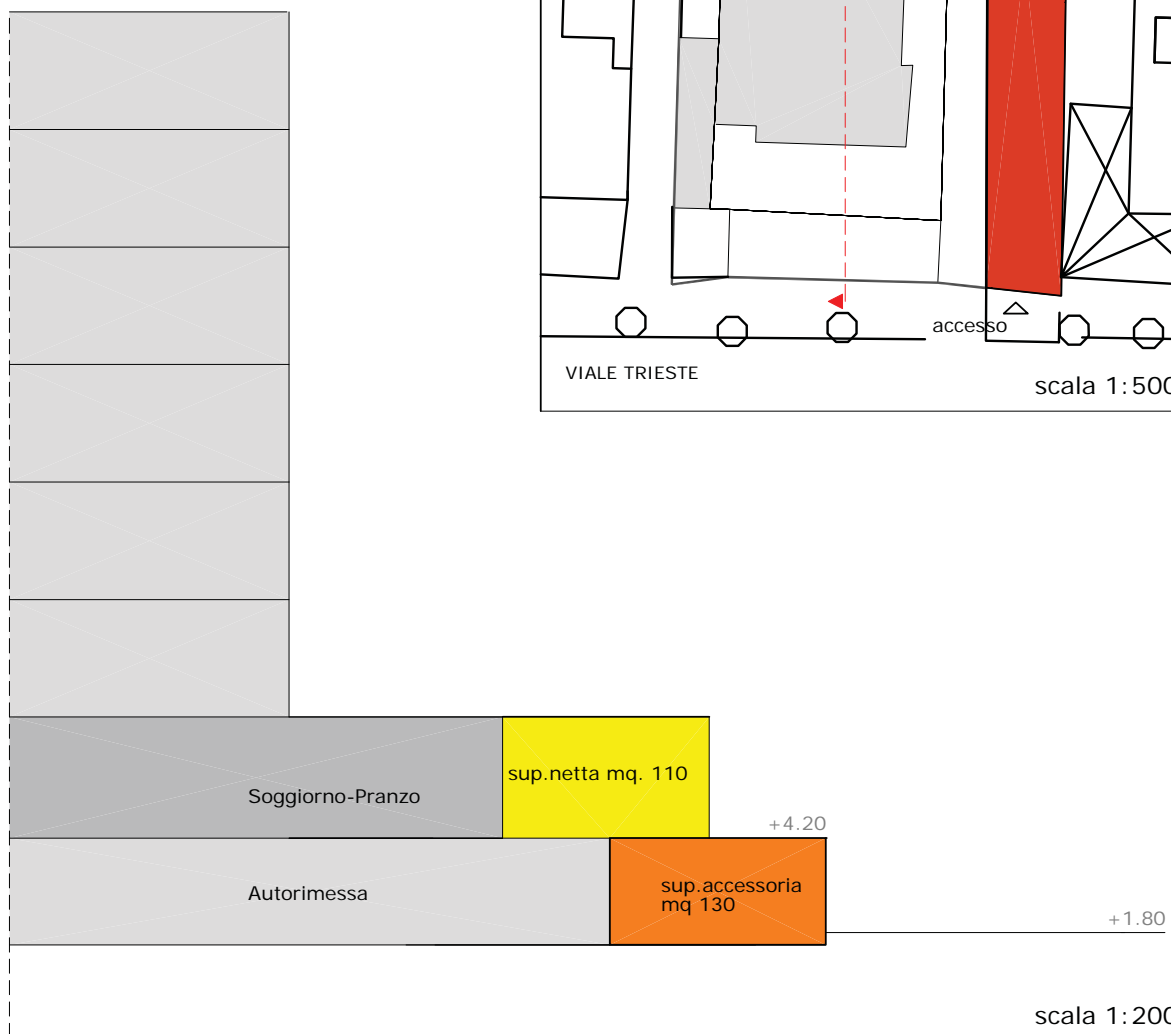
# HOTEL DELLE NAZIONI

UMI 4.3.2

lotto g

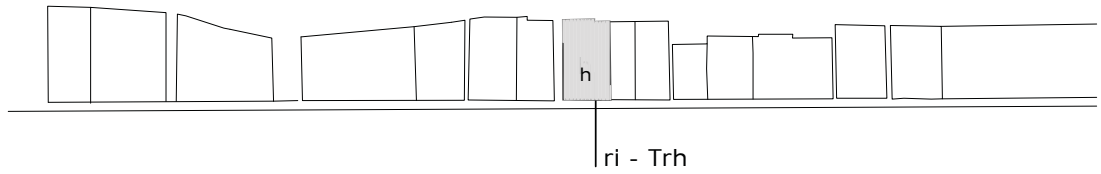




- incremento superficie netta  
mq 110 PIANO PRIMO
- incremento superficie accessoria  
mq 130 PIANO TERRA
- ristrutturazione edilizia  
destinazione esclusiva Trh

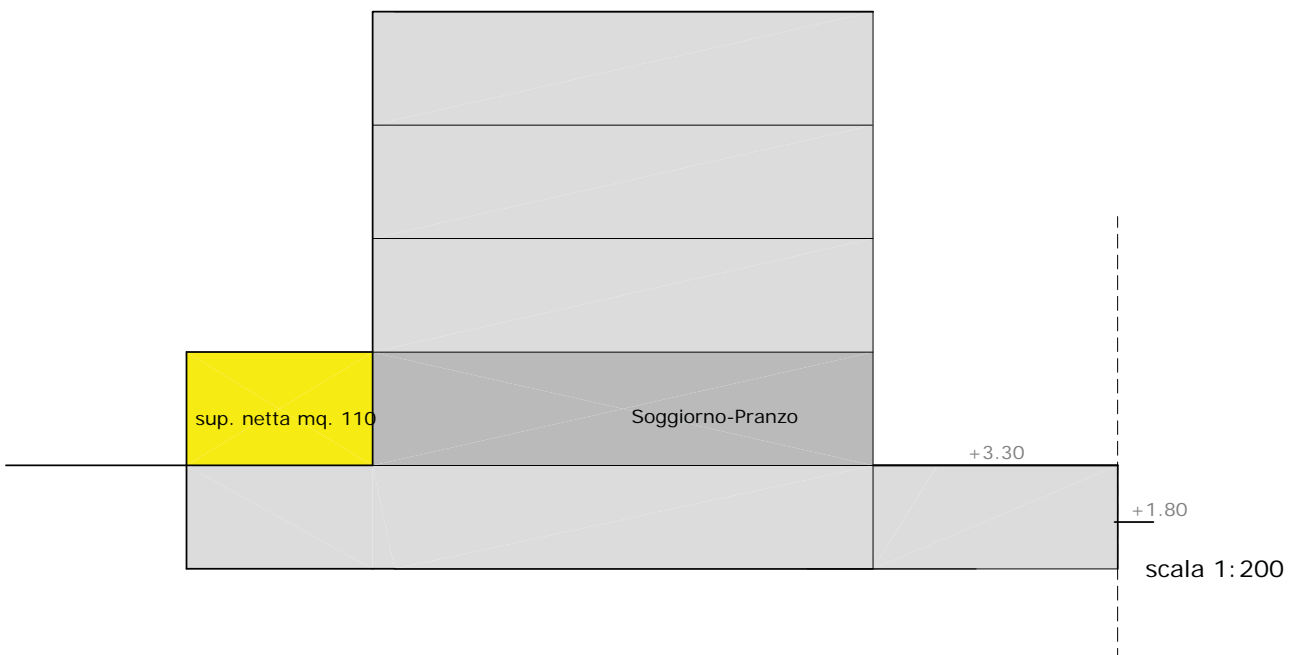
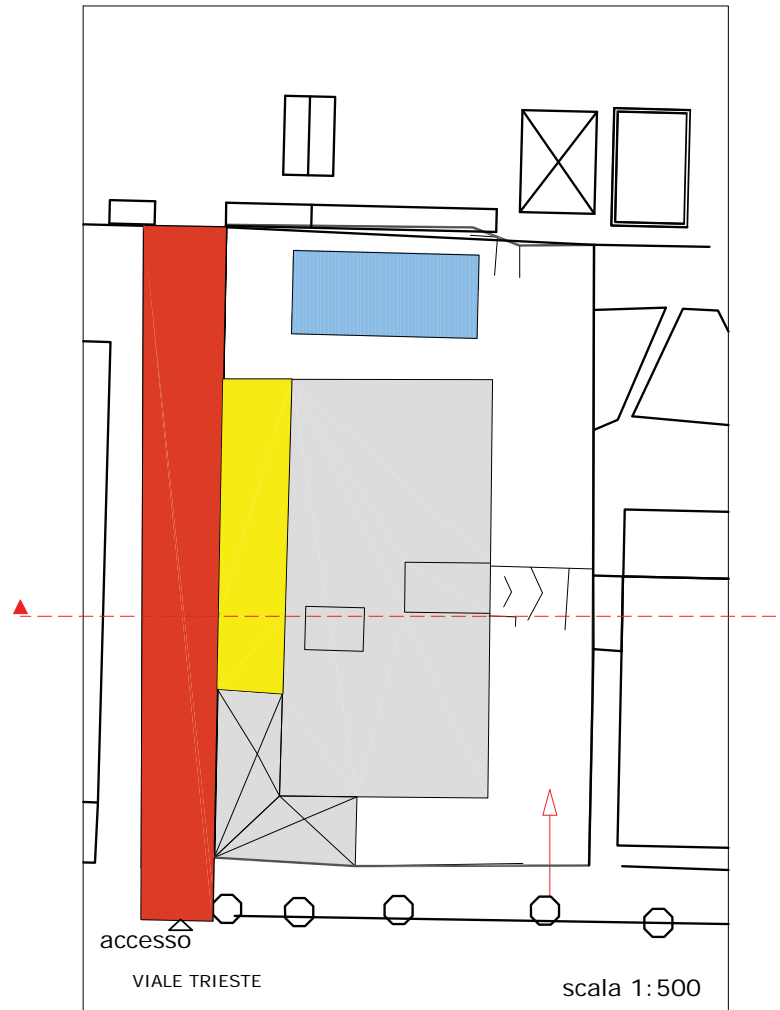


# HOTEL LEONARDO DA VINCI

UMI 4.3.2  
lotto h



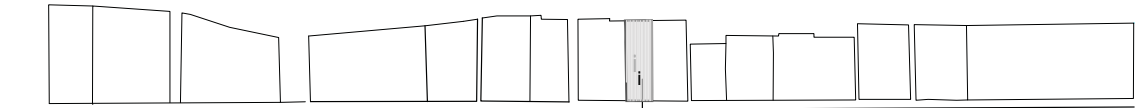
-  incremento superficie netta mq 110 PIANO TERRA
-  ristrutturazione edilizia destinazione esclusiva Trh



# HOTEL DUE PALME

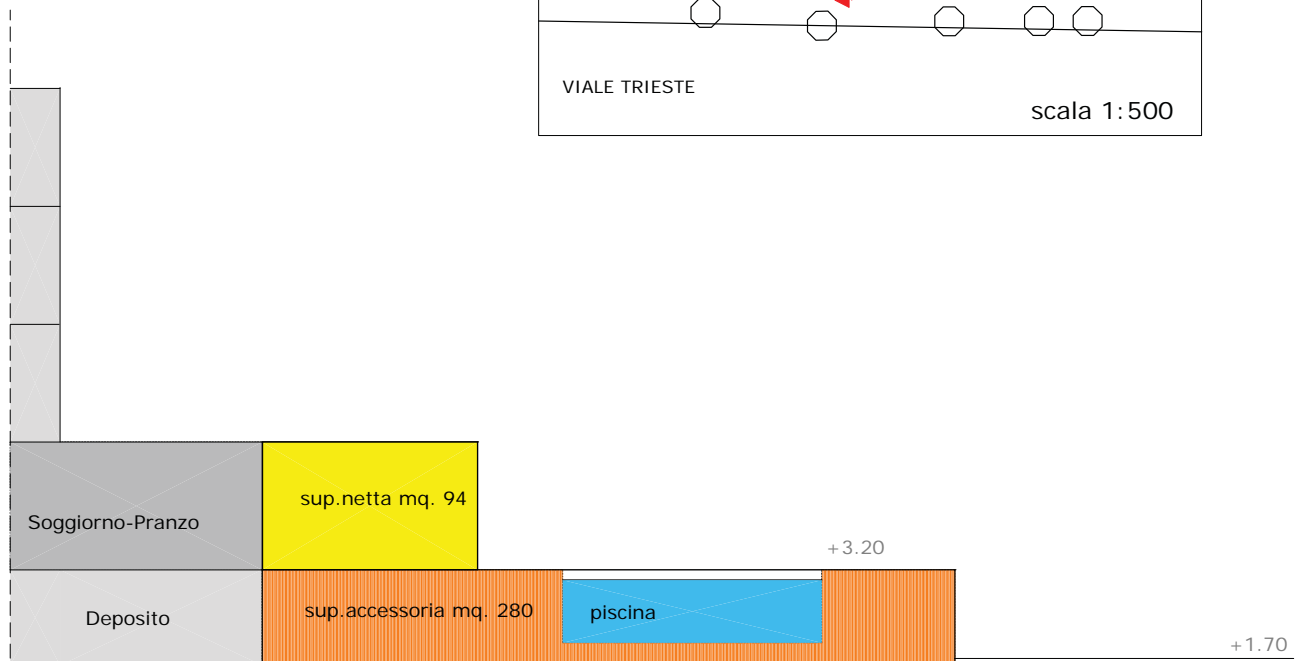
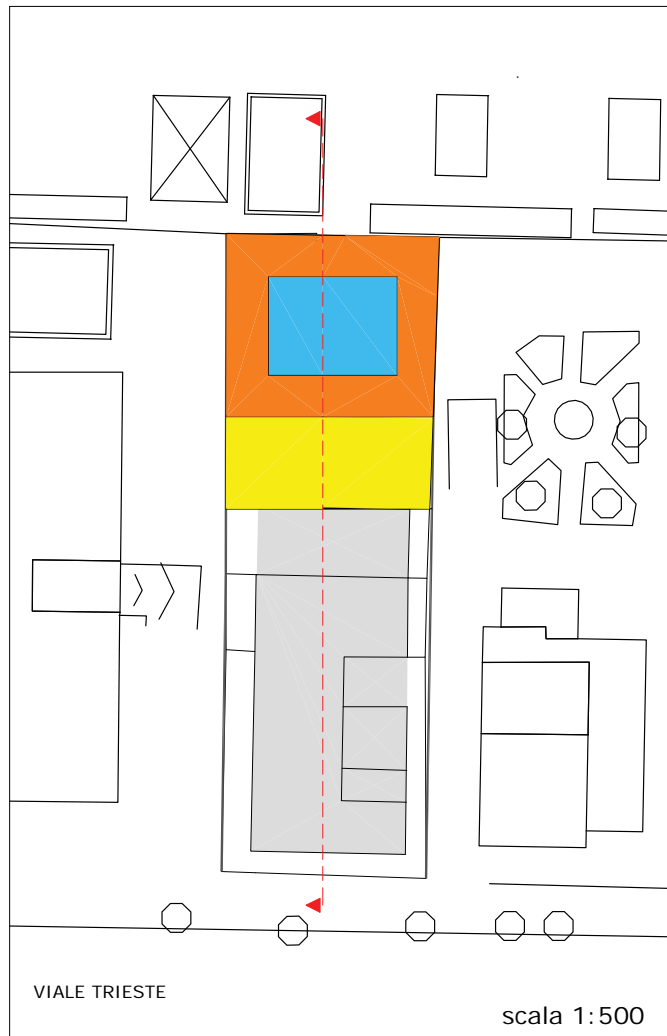
UMI 4.3.2

lotto i



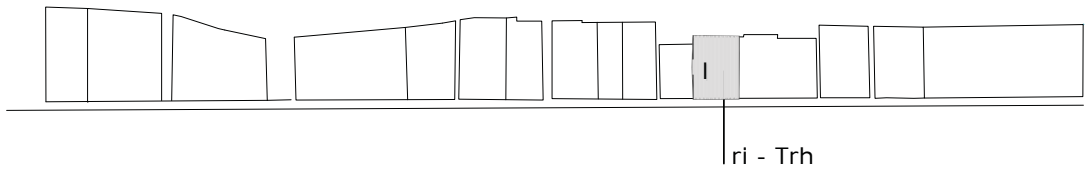
ri - Trh



- incremento superficie netta  
mq 94 PIANO PRIMO
- incremento superficie accessoria  
mq 280 PIANO TERRA
- ristrutturazione edilizia  
destinazione esclusiva Trh

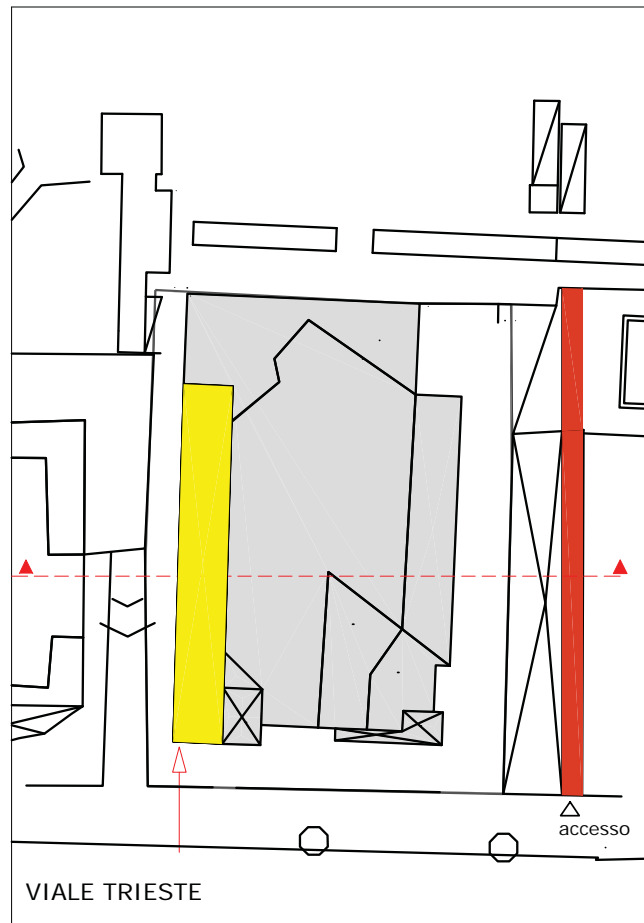


# HOTEL BALTIC

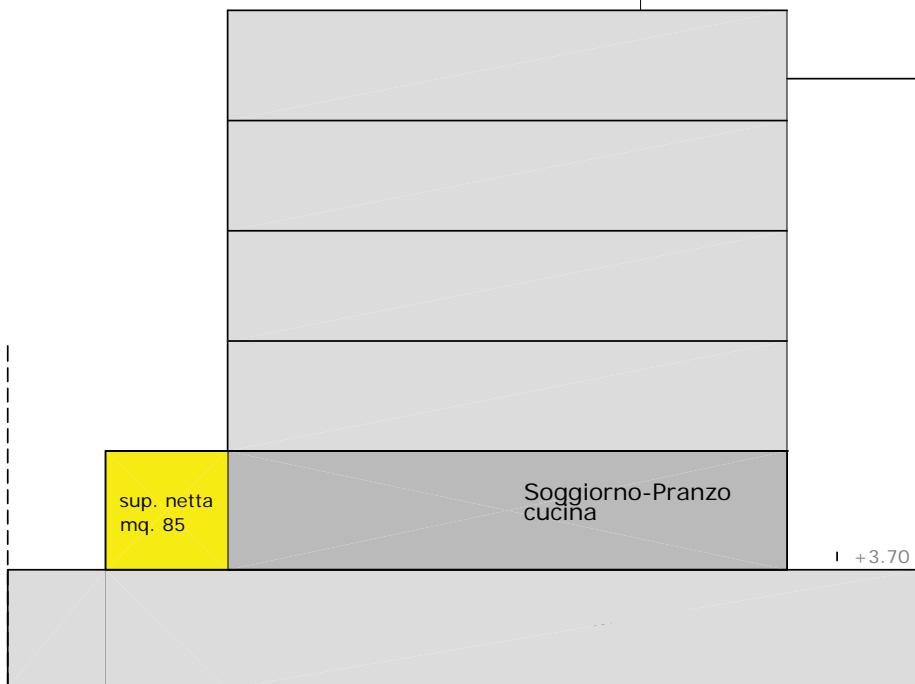
UMI 4.3.2  
lotto I



-  incremento superficie netta mq 85 PIANO TERRA
-  ristrutturazione edilizia destinazione esclusiva Trh



scala 1:500

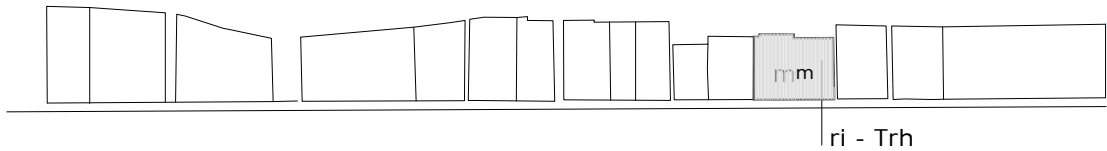


scala 1:200

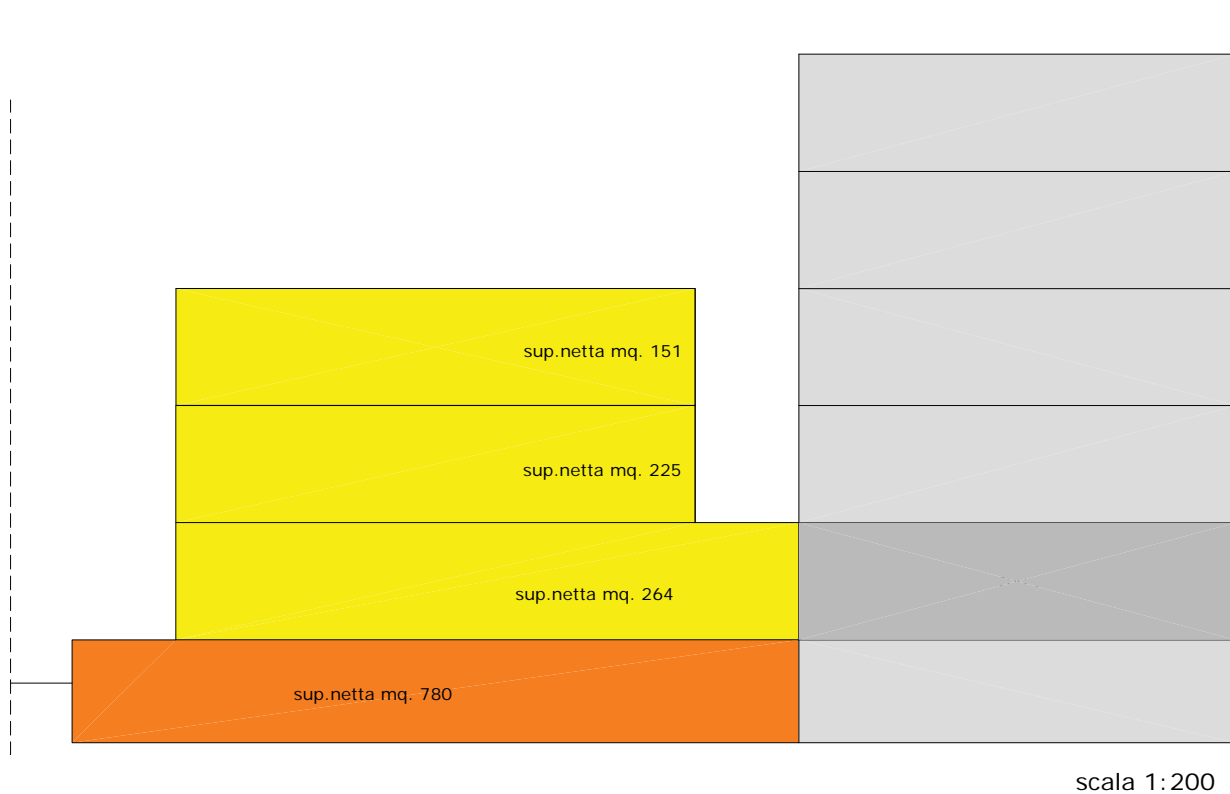
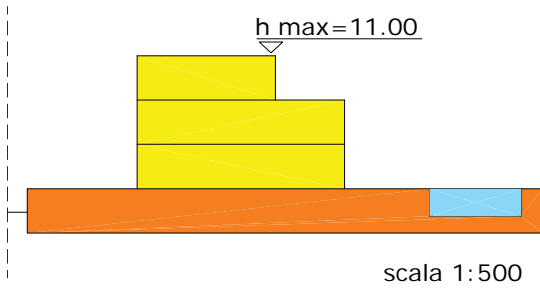
# HOTEL BEAURIVAGE

UMI 4.3.2

lotto m



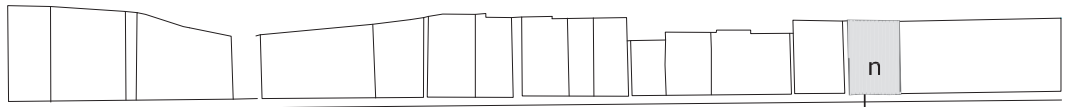
- incremento superficie netta  
mq 640 PIANO TERRA-PRIMO-SECONDO
- incremento superficie accessoria  
mq 780 PIANO SEMINTERRATO
- ristrutturazione edilizia  
destinazione esclusiva Trh



# HOTEL ALEXANDER

UMI 4.3.2

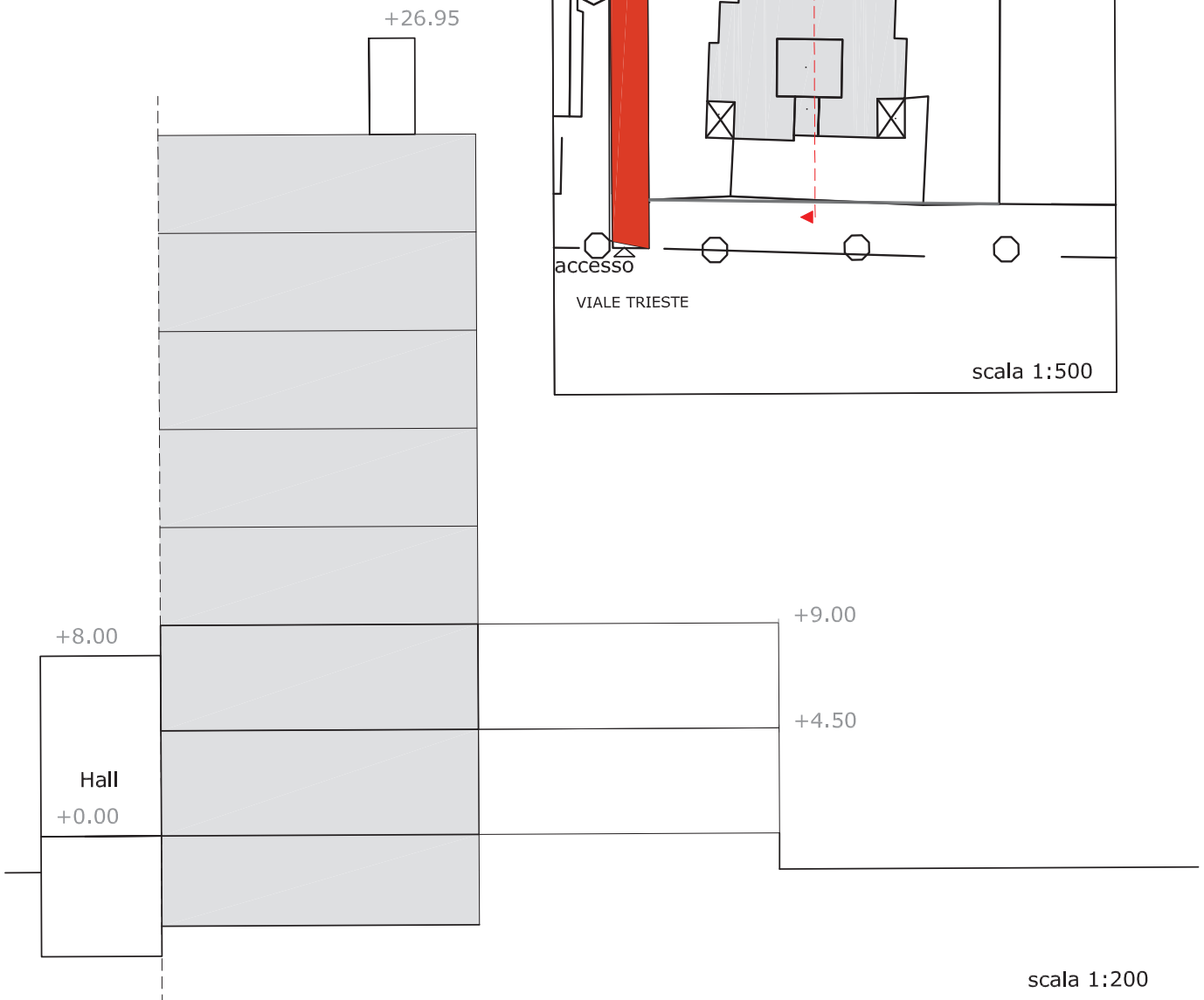
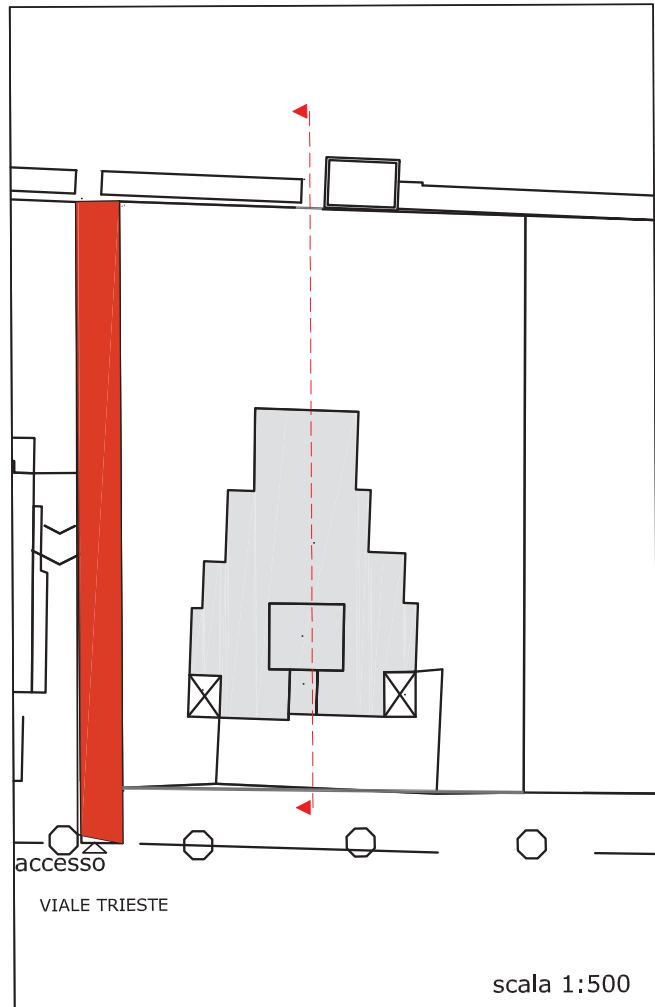
lotto n



variante approvata con delibera di C.C. 70/2006

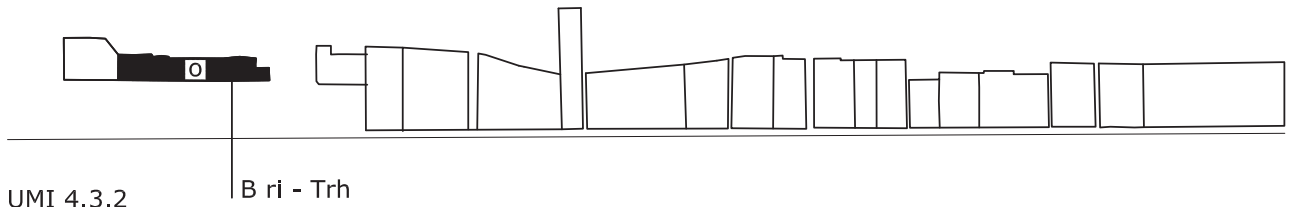
ri - Trh

<p>incremento superficie netta mq 1.012 PIANO SEMINTERRATO/ RIALZATO/PRIMO/COPERTURA</p>
<p>incremento superficie accessoria mq 500 PIANO SEMINTERRATO</p>
<p>incremento superficie logge mq 100 PIANO COPERTURA</p>
<p>ristrutturazione edilizia destinazione esclusiva Trh</p>
<p>allineamento su viale Trieste</p>





# HOTEL EXCELSIOR

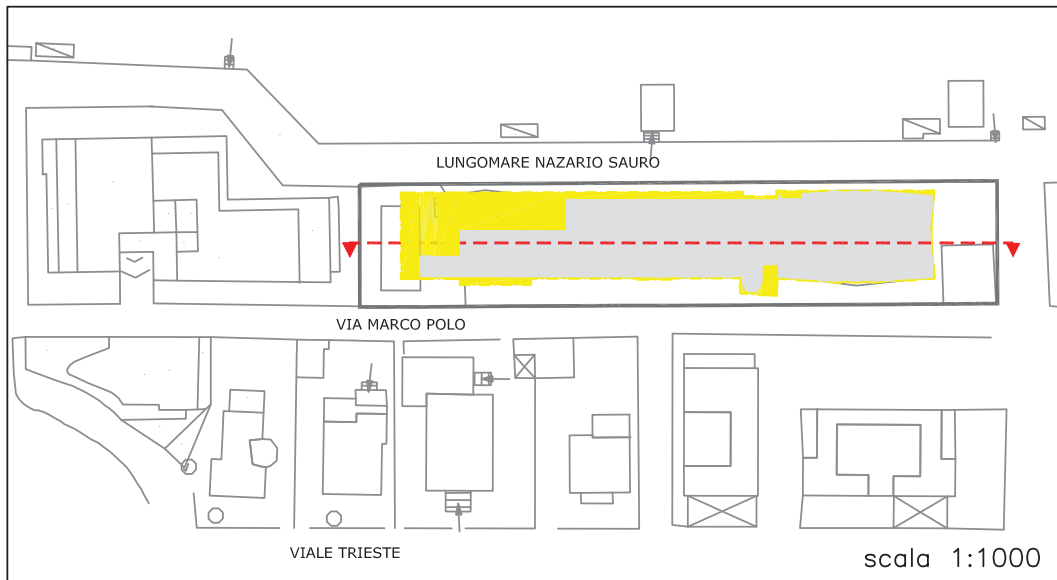


UMI 4.3.2

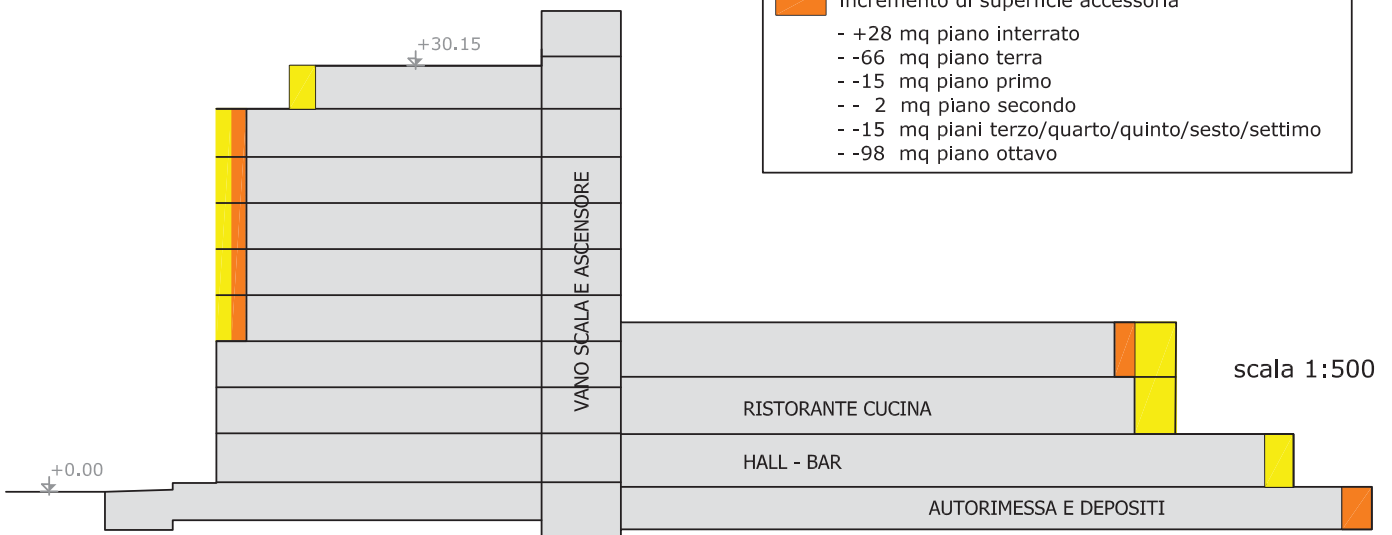
B ri - Trh

lotto o

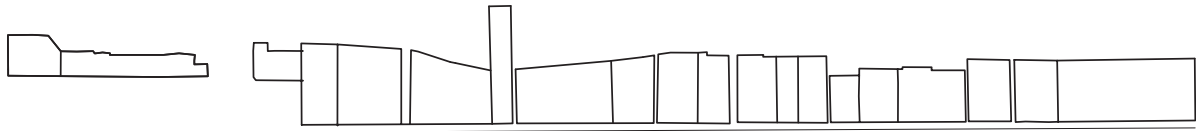
approvato con delibera C.C. 18/2007



	ristrutturazione edilizia destinazione esclusiva Trh
	incremento di superficie netta
	- +251 mq piano terra
	- + 72 mq piano primo
	- +573 mq piano secondo
	- + 78 mq piani terzo/quarto/quinto/sesto/settimo
	- +175 mq piano ottavo
	incremento di superficie accessoria
	- +28 mq piano interrato
	- -66 mq piano terra
	- -15 mq piano primo
	- - 2 mq piano secondo
	- -15 mq piani terzo/quarto/quinto/sesto/settimo
	- -98 mq piano ottavo



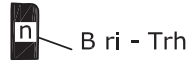
# HOTEL FIGARO



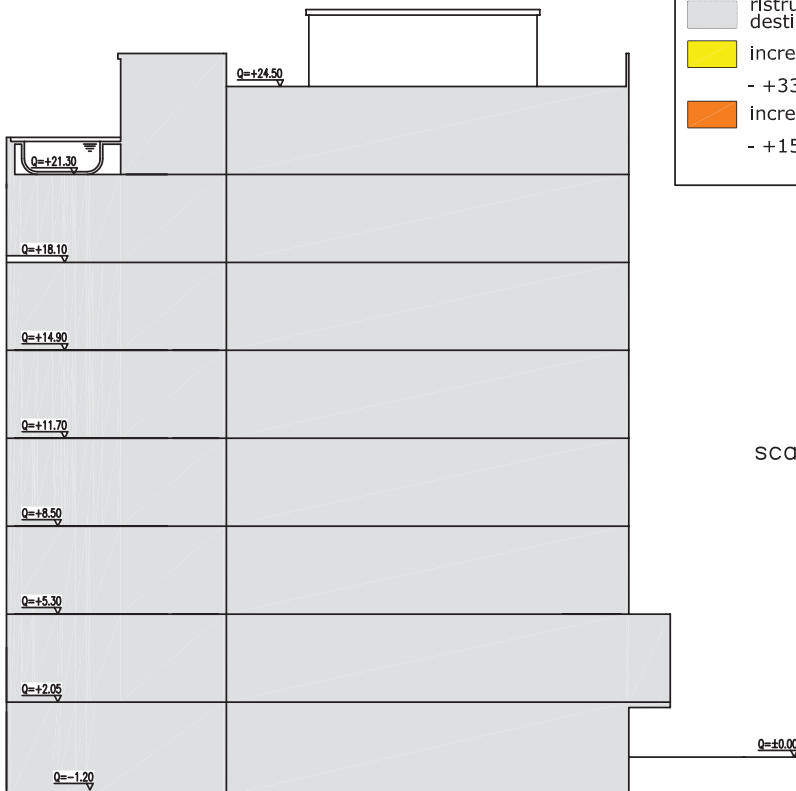
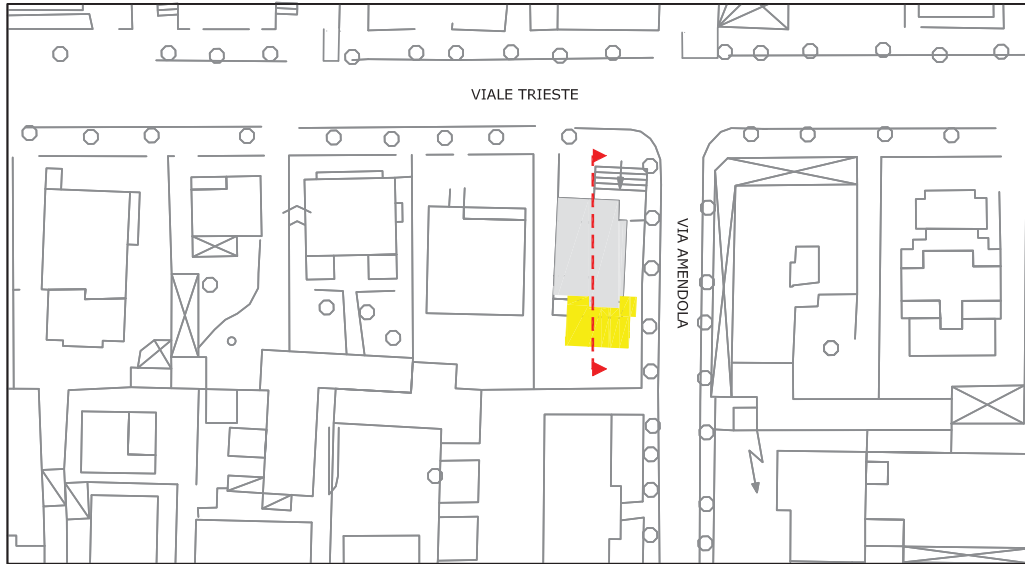
UMI 4.3.2

lotto n

approvato con delibera C.C. 156/2009



scala 1:1000



- ristrutturazione edilizia  
destinazione esclusiva Trh
- incremento di superficie netta  
- +339 mq totali
- incremento di superficie accessoria  
- +152 mq totali

scala 1:250